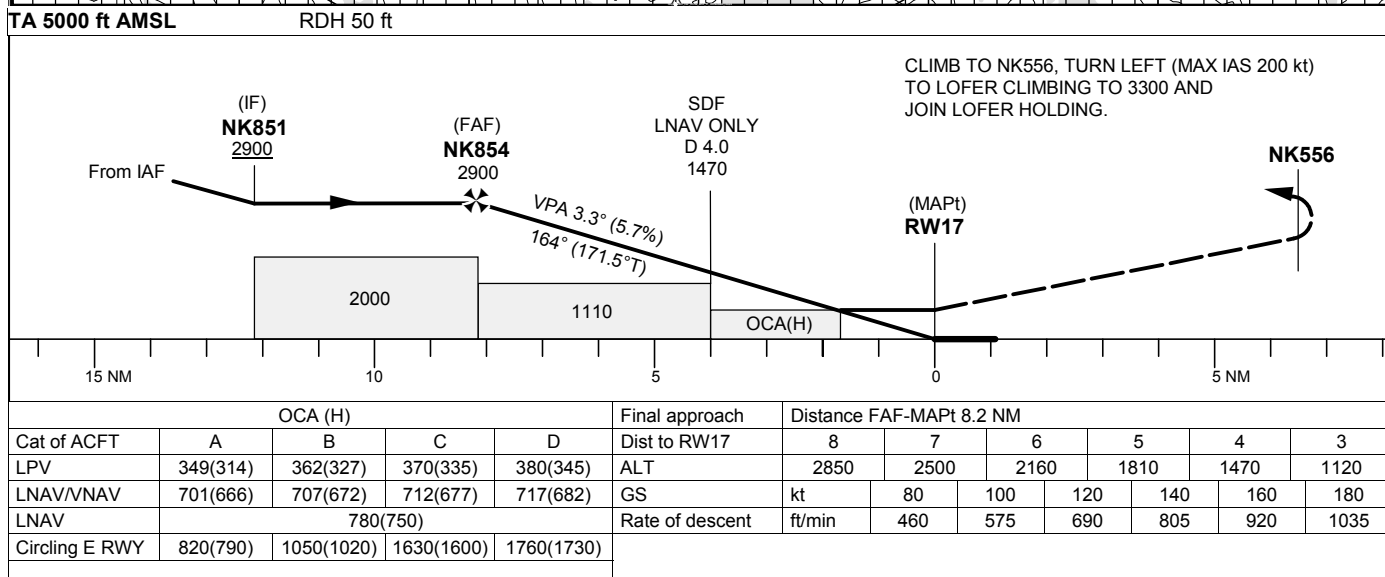
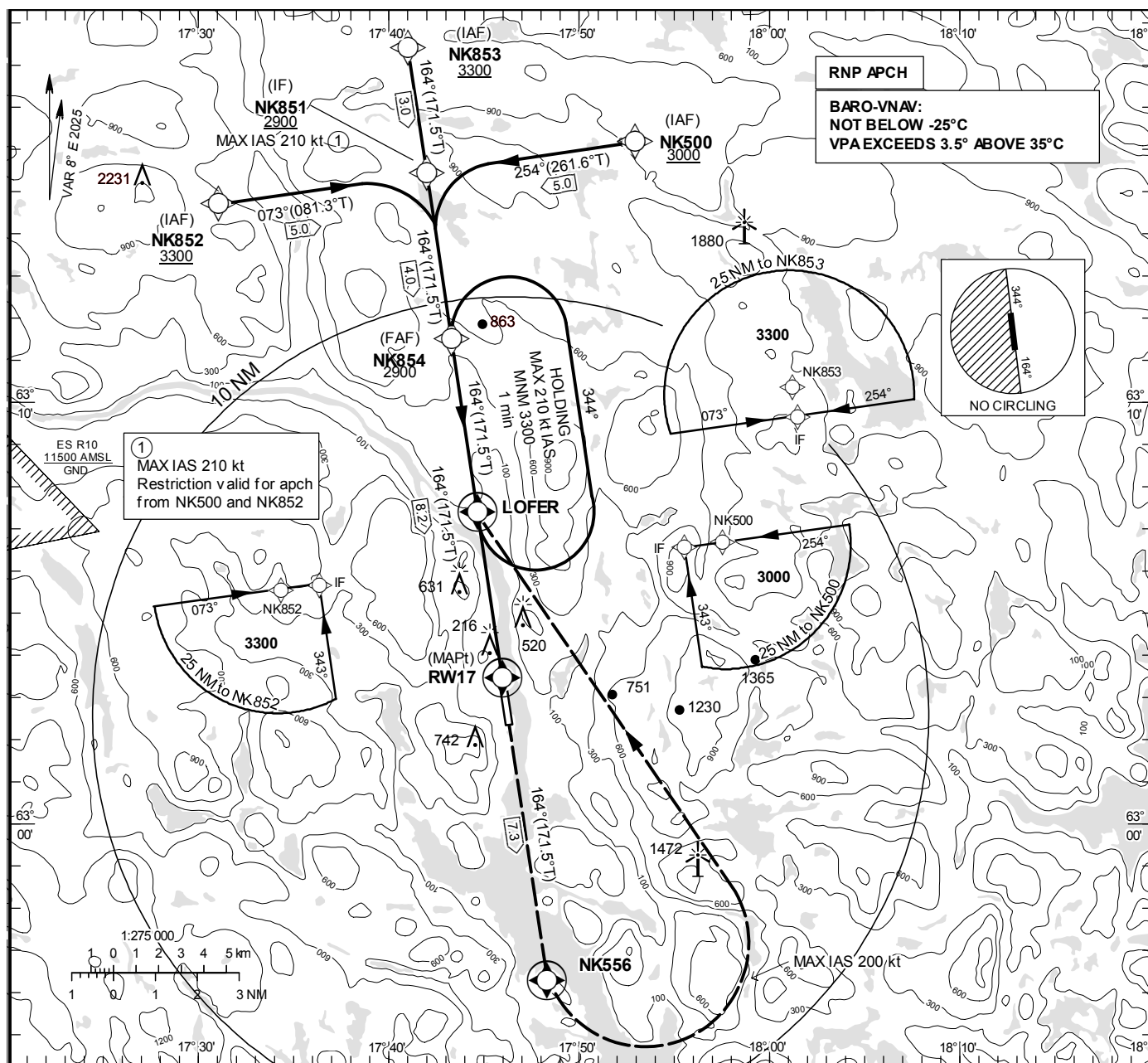


INSTRUMENT  
APPROACH  
CHART – ICAOTHR ELEV 35 ft, AD ELEV 36 ft  
OCH are related to THR.  
BRG are MAG (True).  
ALT, HGT and ELEV in ft.KRAMFORS  
INFORMATION

122.155



CHANGE: Editorial

**KRAMFORS-SOLLEFTEÅ****RNP RWY 17 via NK852**

Path Desc	Waypoint Identifier	Fly-over	Course °M(°T)	Dist (NM)	Turn Dir	Altitude	Speed	VPA/ RDH	Rec Navaid	Navigation Specification
IF	NK852	-	-	-	-	+3300	-	-	-	RNP APCH
TF	NK851	-	073°(081.3°)	5.0	-	+2900	-210	-	-	RNP APCH

**RNP RWY 17 via NK853**

Path Desc	Waypoint Identifier	Fly-over	Course °M(°T)	Dist (NM)	Turn Dir	Altitude	Speed	VPA/ RDH	Rec Navaid	Navigation Specification
IF	NK853	-	-	-	-	+3300	-	-	-	RNP APCH
TF	NK851	-	164°(171.5°)	3.0	-	+2900	-	-	-	RNP APCH

**RNP RWY 17 via NK500**

Path Desc	Waypoint Identifier	Fly-over	Course °M(°T)	Dist (NM)	Turn Dir	Altitude	Speed	VPA/ RDH	Rec Navaid	Navigation Specification
IF	NK500	-	-	-	-	+3000	-	-	-	RNP APCH
TF	NK851	-	254°(261.6°)	5.0	-	+2900	-210	-	-	RNP APCH

Path Desc	Waypoint Identifier	Fly-over	Course °M(°T)	Dist (NM)	Turn Dir	Altitude	Speed	VPA/ RDH	Rec Navaid	Navigation Specification
IF	NK851	-	-	-	-	+2900	-	-	-	RNP APCH
TF	NK854	-	164°(171.5°)	4.0	-	@2900	-	-	-	RNP APCH
TF	RW17	Y	164°(171.5°)	8.2	-	@85	-	-3.25/50	-	RNP APCH
TF	NK556	Y	164°(171.5°)	7.3	-	-	-	-	-	RNP APCH
DF	LOFER	Y	-	-	L	+3300	-200	-	-	RNP APCH

**ESNK Holding LOFER**

Path Desc	Waypoint Identifier	Fly-over	Course °M(°T)	Dist (NM)	Turn Dir	Altitude	Speed	VPA/ RDH	Rec Navaid	Navigation Specification
HM	LOFER	Y	164°(171.5°)	-	L	+3300	-210	-	-	RNP 1

## FAS Data Block

## RNP RWY 17

## Input data

Operation Type	0
SBAS Provider	1 (EGNOS)
Airport Identifier	ESNK
Runway	17
Runway Letter	0 (None)
Approach PerformanceDesignator	0
Route Indicator	
ReferencePath Data Selector	0
ReferencePathIdentifier	E17A
LTP/FTP Latitude	630326.9080N
LTP/FTP Longitude	0174557.3860E
LTP/FTP Ellipsoidal Height (metres)	36.8
FPAP Latitude	630222.9940N
Delta FPAP Latitude (seconds)	-63.9140
FPAP Longitude	0174618.3560E
Delta FPAP Longitude (seconds)	20.9700
ThresholdCrossingHeight	50.0
TCH UnitsSelector	0 (feet)
GlidepathAngle (degrees)	3.25
Course Width (metres)	105.00
Length Offset (metres)	0
HAL (metres)	40.0
VAL (metres)	50.0

## Output data

Data Block	10 0B 0E 13 05 11 00 00 01 37 31 05 78 B3 0F 1B 14 D3 9F 07 70 15 AC 0C FE D4 A3 00 F4 01 45 01 64 00 C8 FA 4B 53 2B C2
Calculated CRC Value	4B532BC2

## RequiredAdditional Data

ICAO Code	ES
LTP/FTP Orthometric Height (metres)	10.8